

STAFF MEMBERS

Nicolas Garcia

Substance Abuse Counselor

707-472-2124

ngarcia@hoplandtribe.com

Gavina Carrillo

Victim Services Program

Coordinator

707-472-2113

gcarrillo@hoplandtribe.com

Maggie Vargas

Program Support Specialist

707-472-2109

mvargas@hoplandtribe.com

Ais Murray

Health and Social Services Director

707-472-2123

amurray@hoplandtribe.com



HOPLAND BAND OF POMO INDIANS

3000 Shanel Road
Hopland, CA 95449
(707) 472-2100

www.hoplandtribe.com
[www.facebook.com/
hoplandtribeofficial](https://www.facebook.com/hoplandtribeofficial)



Health and Social
Services Department

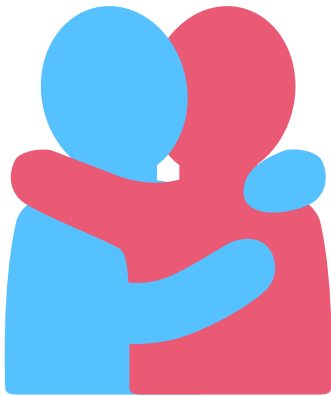
**SUBSTANCE
ABUSE
SERVICES**



PURPOSE OF SAS

The Hopland Tribal Substance Abuse Services is here to help community members with their sobriety and wellness journey.

Substance Abuse Services offers culturally relevant one-on-one substance abuse/misuse assessment, counseling, referrals, care management, and advocacy.



*This project was supported by the 2019 - TW-AX-0034 award by the Office of Violence Against Women, U.S. Department of Justice. The opinions, findings, and conclusions or recommendations expressed in this program publication are those of the author and do not necessarily reflect the views of the U.S. Department of Justice.

SERVICES OFFERED

- Conduct activities to promote prevention of substance misuse/abuse
- Assist program participants to maintain compliance with their recovery plans
- Provide on-site drug testing
- Assist program participants to prepare for presentation in court
- Red-Road Support Group, Native 12 Steps, etc.
- Anger Management Classes (Level I, II, III)
- NAFFA Motherhood & Fatherhood is Sacred - Parenting Skills Building

RESOURCES

Consolidated Tribal Health Project (CTHP)
(707) 485-5115

Mendocino County Aids Network (MCAVHN)
(707) 462-1932

Mendocino County Behavioral Health and Recovery Services
(707) 472-2637

Mendocino County Youth Project
(707) 463-4915

Pinoleville Pomo Nation Vocational Rehab Program
(707) 463-1454

PIMC Nurse Advice Line
(602) 263-1695